

Refrigeration Equipment 4-Drawer Mega Top Prep Table 48" Long 18-1/6 Pan

ITEM # _____

MODEL # _____

NAME # _____

SIS # _____

AIA # _____



738287 (KCHMT48.18.4D)

4-Drawer Mega Top Prep
Table 48" Long 18-1/6 Pan

Short Form Specification

Item No. _____

4-drawer mega top refrigerated preparation table. Exterior back panel and exterior bottom panel in galvanized steel, exterior side and top panel in 430 stainless steel; interior back, top and interior bottom panels in 304 stainless steel, worktop in 304 stainless steel. Built-in refrigeration unit and an insulated lid to maintain food freshness. Fin & Tube Condenser improves performance in high-temperature environments. Automatic Defrost Cooling System to provide worry-free performances. Full-depth cutting board of 48x9x0,5 in. Control panel and removable drawer gaskets. Temperature range: +33/+41°F. R290 gas in the refrigeration circuit.

ETL Safety and Sanitation certifications.

3/5 Years warranty.

Main Features

- Removable gasket for easy cleaning operations.
- Fin & Tube Condenser improves performance in high temperature environments.
- Automatic Defrost Cooling System provides worry-free performance.
- Electronic Temperature Control, quick and simple to set, with control display for easy monitoring.
- Full Depth cutting board.
- External temperature display.
- Cabinet completely insulated with high density polyurethane for low environmental impact.

Construction

- Heavy duty casters.
- Insulated lid maintains food freshness.
- Pre-wired heavy duty power cord.
- Magnetic gasket removable without tools for easy cleaning.

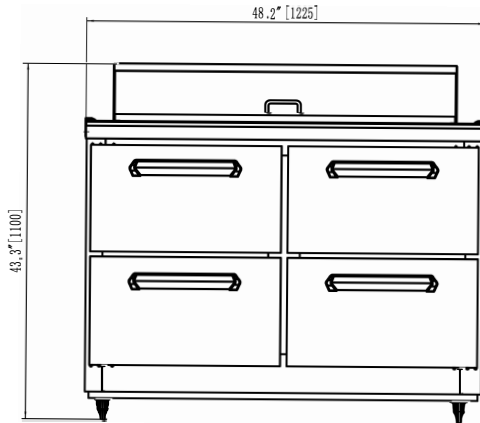
Sustainability

- CFC and HCFC free, highly ecological refrigerant type: R290 (ecological gas in foam: cyclopentane). Hydrocarbon refrigerant gas R290 for the lowest environmental impact (GWP=3), to reduce green house and ozone depletion effects.
- Hydrocarbon refrigerant gas R290 for the lowest environmental impact (GWP=3) - CFC and HCFC free.
- High efficiency components to minimize the energy consumption still guaranteeing the highest performances.

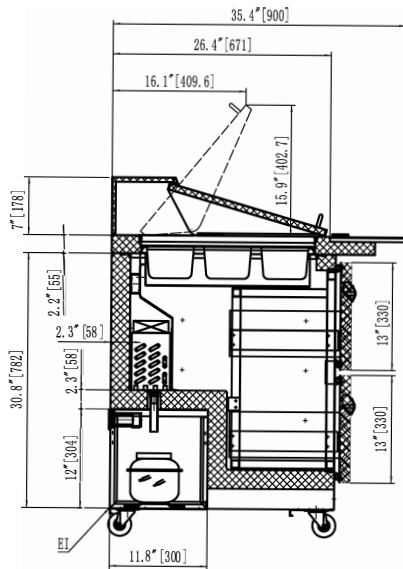
APPROVAL: _____

Refrigeration Equipment 4-Drawer Mega Top Prep Table 48" Long 18-1/6 Pan

Front

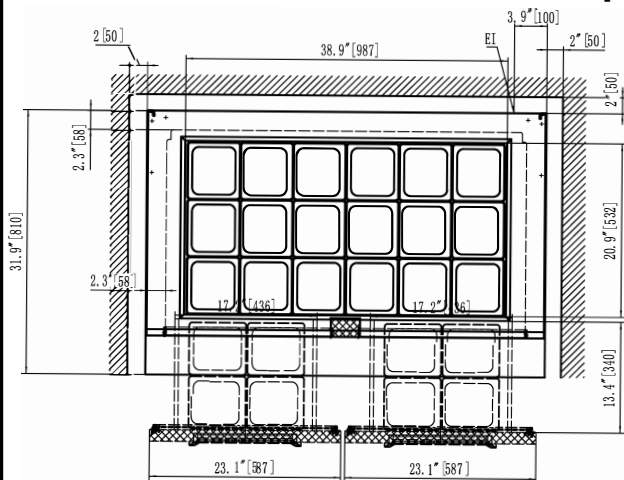


Side



EI = Electrical connection

Top



Electric

Supply voltage:	115 V/1 ph/60 Hz
Electrical power, max:	0.72 kW
Plug type:	USA NEMA 5-15P

Capacity:

Gross capacity:	12 cu.feet
-----------------	------------

Key Information:

Warranty:	3 / 5 years
External dimensions, Width:	48 1/4" (1225 mm)
External dimensions, Depth:	35 7/16" (900 mm)
External dimensions, Height:	43 5/16" (1100 mm)
Internal Dimensions (depth):	23 13/16" / (605 mm)
Internal Dimensions (height):	23 1/2" / (597 mm)
Internal Dimensions (width):	42 13/16" / (1088 mm)
Shipping height:	47 1/4" (1200 mm)
Shipping weight:	421 lbs (191 kg)
Type of external material:	Stainless Steel
Type of internal material:	Polystyrene
Approvals	ETL C&US;ETL SANITATION
N° of drawers:	4

Refrigeration Data

Condenser type:	Fin & tube
Operating temperature min.:	32 °F
Compressor power:	1/3 hp
Operating temperature max.:	41 °F
Defrost type:	Auto Defrost

Sustainability

Current consumption:	4.3 Amps
Refrigerant type:	R290
GWP Index:	3
Refrigerant weight:	90 g

